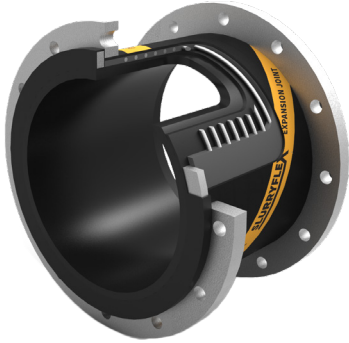


SJD-SERIES

Vibration Joint

Slurryflex SJD-Series expansion joints are suitable for many applications including vibration control, pipework misalignment and thermal expansion in abrasive slurry applications. Custom designed and manufactured in Australia, they are a premium quality product made using proprietary compounds to suit the most arduous applications.

Standard applications include transfer of abrasive slurries, mineral processing plants, tailings lines, sand and gravel. Also available in custom designs for specialty applications such as fluids or slurries containing chemicals, acids and hydrocarbons.



Technical Specification

Joint Diameter	DN50-1500 (2-60") (consult factory for larger)
Joint Lengths	To suit requirements
End Connections	Fixed flange Beaded end swivel flange Double flange Plain cut end
Flange Drillings	AS2129, ASME, BS, SABS, JIS, DIN, custom
Pressure Rating	Up to 5000kPa as standard (consult factory for special requirement)
Safety Factor	4:1 for minimum burst pressure as standard (consult factory for special requirement)
Temperature Rating	-30°C to +75°C as standard (consult factory for special requirement)

Material Specification

Inner Liner	Slurryflex Grade-A Rubber, proprietary compound for wear performance in abrasive slurries (consult factory for other specialty applications)
Reinforcement	Wire helix
Outer Cover	Proprietary rubber compound for UV, ozone and abrasion resistance
End Connections	Carbon steel (painted, galvanised, custom) Stainless steel (SS304, SS316) Exotic alloy (consult factory)

Standard Physical Properties

Joint Diameter ¹			Std. Liner Thickness ²		Max. Liner Thickness ³		Std. Working Pressure		Max. Working Pressure		Safety Factor ⁴
DN	in	mm	mm	in	mm	in	kPa	PSI	kPa	PSI	Ratio
50	2	51	6	¼	6	¼	1000	150	5000	725	4:1
75	3	76	6	¼	9	⅜	1000	150	5000	725	4:1
100	4	102	6	¼	12	½	1000	150	5000	725	4:1
125	5	127	6	¼	12	½	1000	150	5000	725	4:1
150	6	152	6	¼	12	½	1000	150	5000	725	4:1
200	8	203	6	¼	12	½	1000	150	5000	725	4:1
250	10	254	9	⅜	15	⅝	1000	150	5000	725	4:1
300	12	304	9	⅜	19	¾	1000	150	5000	725	4:1
350	14	355	9	⅜	19	¾	1000	150	5000	725	4:1
400	16	405	12	½	19	¾	1000	150	5000	725	4:1
450	18	457	12	½	19	¾	1000	150	4000	580	4:1
500	20	508	12	½	19	¾	1000	150	4000	580	4:1
550	22	559	12	½	19	¾	1000	150	4000	580	4:1
600	24	610	12	½	19	¾	1000	150	4000	580	4:1
650	26	660	15	⅝	19	¾	700	100	3000	435	4:1
700	28	711	15	⅝	19	¾	700	100	3000	435	4:1
750	30	762	15	⅝	19	¾	700	100	3000	435	4:1
800	32	813	15	⅝	25	1	700	100	3000	435	4:1
900	36	914	15	⅝	25	1	700	100	3000	435	4:1
1000	40	1016	19	¾	30	1¼	700	100	3000	435	4:1
1100	44	1118	19	¾	30	1¼	700	100	2500	362	4:1
1200	48	1219	19	¾	32	1⅙	700	100	2500	362	4:1
1300	52	1321	19	¾	40	1⅝	700	100	2500	362	4:1
1400	56	1422	19	¾	40	1⅝	700	100	2500	362	4:1
1500	60	1524	19	¾	40	1⅝	700	100	2500	362	4:1

1. Custom joint diameter sizes available to client's specification on request.
2. Standard inner liner thickness recommended based on slurry applications, min 3mm for non-abrasive applications.
3. Maximum inner liner thickness available assuming fixed flange, ASME Class 150, 1000kPa WP 4:1 (consult factory where different specification).
4. Safety factor is the ratio of working pressure vs. min burst pressure rating (note actual calculated burst pressure may be significantly higher).

Contact

Exclusively distributed by
Beaver Process Equipment
T 1300 295 799
E sales@slurryflexsystems.com
W slurryflexsystems.com