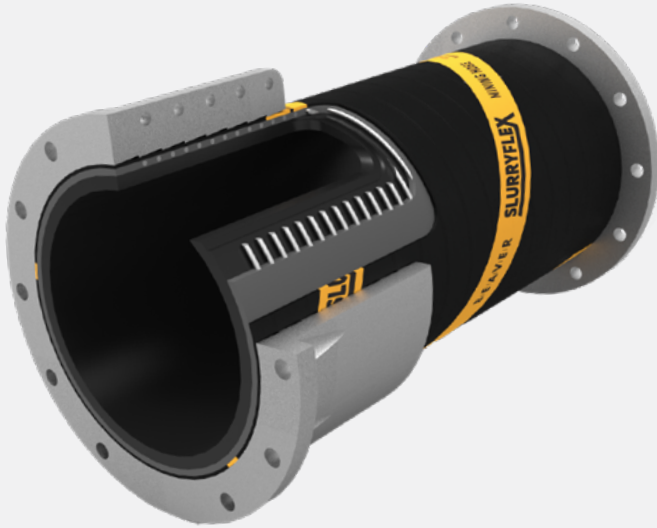


SM-Series

Specialty Muff Coupling Mining Hose



Slurryflex SM-Series muff coupling mining hose suitable for suction and discharge duty. Designed and manufactured in Australia, this premium product is suitable for the most arduous applications.

Typically used where flexible hose is required to be cut to length on site (e.g. where exact length unknown or as emergency replacement). Standard applications include slurry or water transfer in mineral processing plants, tailings pipelines, dredging, and dewatering.

Suitable for both small particle (erosive) and large particle (cutting/gouging) slurry conditions. Suitable for specialty applications such as slurry or other fluids containing chemicals, acids, and hydrocarbons. Fully customisable with special engineered designs available on request.

Technical Specifications

Hose size	DN50–400 (2–16") as standard
Hose length	Up to 20m (66') as standard
Pressure rating	-100kPa to +700kPa (-14.5psi to 100psi) Higher on request
Temperature rating	-30°C to +75°C for Slurryflex Grade A rubber
End connection 1	Muff coupling Plain end Flanged (fixed or swivel) Flanged full spigot (fixed or swivel) Double flanged Grooved (roll or cut) Threaded Butt weld Custom
End connection 2	Muff coupling Plain end
Flange types	AS2129, ASME B16.5, ASME B16.47, AWWA C207, AS4087, BS EN 1092, BS 3293, JIS B2220, SANS 1123, DIN ISO 7005, custom
Groove types	AWWA C606 OGS, Victaulic AGS, custom
Thread types	BSP, NPT, API, premium, custom
Safety factor	4:1 as standard
Extra options	Custom nozzles, branches, or connections Wear monitoring system (plug-only or push-button)

Material Specifications

Inner liner	Slurryflex Grade A rubber (for high-wear slurry) Slurryflex ASR rubber (for acidic slurry) Slurryflex HSR rubber (for hydrocarbon-containing slurry) Slurryflex TSR rubber (for high-temperature slurry) Slurryflex custom formulation
Reinforcement	Synthetic fabric and wire helix
Outer cover	UV, ozone, and abrasion-resistant rubber
Integral end connections	Carbon steel (painted, galvanised, custom) Stainless steel (SS304, SS316) Exotic alloy
Muff coupling	Aluminium Cast iron

Standard Properties

DN	Hose Size		Standard Liner Thickness		Vacuum Rating	Standard Working Pressure		Min Bend Radius		
	in	mm	mm	in	%	kPa	PSI	m	ft	x Dia
50	2	51	6	¼	100	700	100	0.4	1.3	8
80	3	76	6	¼	100	700	100	0.6	2.1	8
100	4	102	6	¼	100	700	100	0.8	2.6	8
125	5	127	6	¼	100	700	100	1.0	3.3	8
150	6	152	6	¼	100	700	100	1.2	3.9	8
200	8	203	6	¼	100	700	100	1.6	5.2	8
250	10	254	9	¾	100	700	100	2.0	6.6	8
300	12	304	9	¾	100	700	100	2.4	7.9	8
350	14	355	12	½	100	700	100	2.8	9.2	8
400	16	405	12	½	100	700	100	3.2	10.5	8

Notes

1. Product is fully customisable and available in non-standard specifications on request.
2. Safety factor is the ratio of working pressure to minimum rated burst pressure.
3. Standard liner thickness is the thickness recommended for general slurry applications (min 3mm for non-abrasive applications, e.g. water).
4. Minimum bend radius is the recommended design limit for a 6m hose length with fixed flange, standard working pressure, and standard liner thickness. If smaller bend radius required, see SC-Series Pre-Formed Bend or SF-Series Superflex Hard-Wall Mining Hose.