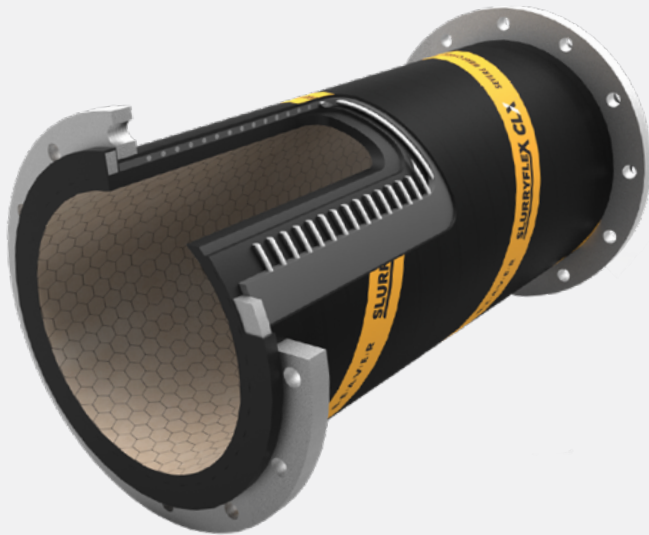


XA-Series

Specialty Hard-Wall Ceramic Hose



Slurryflex CLX XA-Series hard-wall ceramic hose suitable for suction and discharge duty. Designed and manufactured in Australia, it is the ultimate solution for severe wear slurry applications where flexibility is required.

It allows for movement and misalignment, and ease of installation and replacement. Typical applications include high-wear slurry in mineral processing plants, dredging, and slurry pipelines. Fully customisable with special engineered designs available on request.

The CLX composite ceramic/rubber liner system exhibits both the very high wet sliding abrasion resistance of ceramic combined with the very high energy rebound and dispersion of rubber. This combination provides ultimate performance in severe slurry applications, particularly for medium impingement angle (10–45°) wear, such as bends and fittings.

Technical Specifications

| | |
|------------------------------|---------------------------------------------------------------------------------------------------------------------------------------------------------------|
| Hose size | DN80–1500 (3–60") as standard |
| Hose length | Up to 20m (66') as standard |
| Pressure rating | -100kPa to +5000kPa (-14.5psi to +725psi) Higher on request |
| Temperature rating | -30°C to +75°C for Slurryflex Grade A rubber + CLX ceramic |
| CLX internal coverage | Cross-section: full 360° as standard Longitudinal: full length as standard |
| End connections | Plain end Flanged (fixed or swivel) Flanged full spigot (fixed or swivel) Double flanged Grooved (roll or cut) Threaded Butt weld Custom |
| Flange types | AS2129, ASME B16.5, ASME B16.47, AWWA C207, AS4087, BS EN 1092, BS3293, JIS B2220, SANS 1123, DIN ISO 7005, custom |
| Groove types | AWWA C606 OGS, Victaulic AGS, custom |
| Thread types | BSP, NPT, API, premium, custom |
| Safety factor | 4:1 as standard |
| Extra options | Custom nozzles, branches, or connections Wear monitoring system (plug-only or push-button) |

Material Specifications

| | |
|------------------------|--------------------------------------------------------------------------------------------------------------------------------------------------------------------------------------------------------------------------------------------------------------------------------------------------------------------------------------------------------------------------------------------------------------------------------------|
| Inner liner | Slurryflex Grade A rubber + CLX ceramic (for severe wear slurry) Slurryflex ASR rubber + CLX ceramic (for acidic slurry) Slurryflex OSR rubber + CLX ceramic (for oil sands slurry) Slurryflex HSR rubber + CLX ceramic (for high-temp slurry) Slurryflex + CLX custom formulation |
| CLX ceramic | CLX standard (92% alumina, with 1x wear resistance and 1x fracture toughness) CLX-A95 (95% alumina, with 2x wear resistance and 1x fracture toughness) CLX-A99 (99% alumina, with 4x wear resistance and 1.1x fracture toughness) CLX-ZTA (zirconia-toughened alumina, with 4.4x wear resistance and 1.4x fracture toughness) CLX-ARZ (alumina-reinforced zirconia, with 6.6x wear resistance and 2x fracture toughness) |
| Reinforcement | Synthetic fabric and wire helix |
| Outer cover | UV, ozone, and abrasion-resistant rubber |
| End connections | Carbon steel (painted, galvanised, custom) Stainless steel (SS304, SS316) Exotic alloy |

Standard Properties

| Hose Size | | CLX Ceramic Thickness | | Vacuum Rating | Standard Working Pressure | | Max Working Pressure | | |
|-----------|----|-----------------------|--------------|---------------|---------------------------|------|----------------------|------|-----|
| DN | in | mm | Min/Std (mm) | Max (mm) | % | kPa | PSI | kPa | PSI |
| 50 | 2 | 51 | 4.5 | 4.5 | 100 | 1000 | 150 | 5000 | 725 |
| 80 | 3 | 76 | 4.5 | 4.5 | 100 | 1000 | 150 | 5000 | 725 |
| 100 | 4 | 102 | 4.5 | 6 | 100 | 1000 | 150 | 5000 | 725 |
| 125 | 5 | 127 | 4.5 | 6 | 100 | 1000 | 150 | 5000 | 725 |
| 150 | 6 | 152 | 4.5 | 6 | 100 | 1000 | 150 | 5000 | 725 |
| 200 | 8 | 203 | 4.5 | 12 | 100 | 1000 | 150 | 5000 | 725 |
| 250 | 10 | 254 | 4.5 | 12 | 100 | 1000 | 150 | 5000 | 725 |
| 300 | 12 | 304 | 4.5 | 12 | 100 | 1000 | 150 | 5000 | 725 |
| 350 | 14 | 355 | 4.5 | 12 | 100 | 1000 | 150 | 5000 | 725 |
| 400 | 16 | 405 | 4.5 | 12 | 100 | 1000 | 150 | 5000 | 725 |
| 450 | 18 | 457 | 4.5 | 12 | 100 | 1000 | 150 | 5000 | 725 |
| 500 | 20 | 508 | 4.5 | 12 | 100 | 1000 | 150 | 5000 | 725 |
| 550 | 22 | 565 | 4.5 | 12 | 100 | 1000 | 150 | 5000 | 725 |
| 600 | 24 | 610 | 4.5 | 12 | 100 | 1000 | 150 | 5000 | 725 |
| 650 | 26 | 660 | 4.5 | 12 | 100 | 700 | 100 | 4000 | 580 |
| 700 | 28 | 711 | 4.5 | 12 | 100 | 700 | 100 | 4000 | 580 |
| 750 | 30 | 762 | 4.5 | 12 | 100 | 700 | 100 | 4000 | 580 |
| 800 | 32 | 813 | 4.5 | 12 | 100 | 700 | 100 | 3000 | 435 |
| 900 | 36 | 914 | 4.5 | 12 | 100 | 700 | 100 | 3000 | 435 |
| 1000 | 40 | 1016 | 4.5 | 12 | 100 | 700 | 100 | 3000 | 435 |
| 1100 | 44 | 1118 | 4.5 | 12 | 100 | 700 | 100 | 2500 | 362 |
| 1200 | 48 | 1219 | 4.5 | 12 | 100 | 700 | 100 | 2500 | 362 |
| 1300 | 52 | 1321 | 4.5 | 12 | 100 | 700 | 100 | 2500 | 362 |
| 1400 | 56 | 1422 | 4.5 | 12 | 100 | 700 | 100 | 2500 | 362 |
| 1500 | 60 | 1524 | 4.5 | 12 | 100 | 700 | 100 | 2500 | 362 |

Notes

1. Product is fully customisable and available in non-standard specifications on request.
2. CLX internal coverage for "cross-section" refers to CLX tile pad coverage around the hose inside diameter (i.e. X degrees, from Y o'clock to Z o'clock).
3. CLX internal coverage for "longitudinal" refers to CLX tile pad coverage down the length of the hose (i.e. starting X mm from end 1 and finishing Y mm from end 2).
4. Safety factor is the ratio of working pressure to minimum rated burst pressure.
5. Minimum bend radius will vary for each Slurryflex CLX hose design.