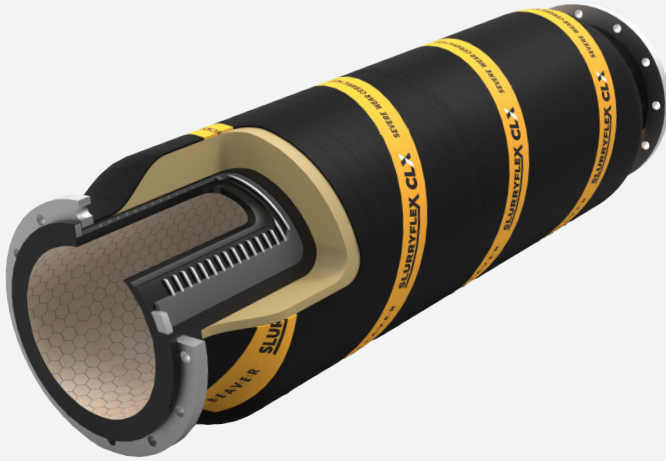


XH-Series

Specialty Self-Floating Ceramic Hose



Slurryflex CLX XH-Series self-floating hard-wall ceramic hose suitable for suction and discharge duty. Designed and manufactured in Australia, it is the ultimate solution for severe wear slurry applications where flexibility is required.

It allows for movement and misalignment, and ease of installation and replacement. Typical applications include high-wear slurry in mineral processing plants, dredging, and slurry pipelines. Fully customisable with special engineered designs available on request.

The CLX composite ceramic/rubber liner system exhibits both the very high wet sliding abrasion resistance of ceramic combined with the very high energy rebound and dispersion of rubber. This combination provides ultimate performance in severe slurry applications, particularly for medium impingement angle (10-45°) wear, such as bends and fittings.

Integral buoyancy foam in robust double-carass construction avoids the problems associated with using pipe floats (no catching on floats, floats moving, or bunching causing hose to sink).

Technical Specifications

Hose size	DN80-1500 (3-60") as standard
Hose length	Up to 15m (50') as standard
Pressure rating	-100kPa to +5000kPa (-14.5psi to +725psi) Higher on request
Temperature rating	-30°C to +75°C for Slurryflex Grade A rubber + CLX ceramic
CLX internal coverage	Cross-section: full 360° as standard Longitudinal: full length as standard
Buoyancy rating	0% (neutral) to 50% (half of hose out of water)
End connections	Full spigot fixed flange Full spigot swivel flange Custom
Flange types	AS2129, ASME B16.5, ASME B16.47, AWWA C207, AS4087, BS EN 1092, BS 3293, JIS B2220, SANS 1123, DIN ISO 7005, custom
Safety factor	4:1 as standard
Extra options	Custom nozzles, branches, or connections Wear monitoring system (plug-only or push-button)

Material Specifications

Inner liner	Slurryflex Grade A rubber + CLX ceramic (for severe wear slurry) Slurryflex ASR rubber + CLX ceramic (for acidic slurry) Slurryflex OSR rubber + CLX ceramic (for oil sands slurry) Slurryflex HSR rubber + CLX ceramic (for high-temp slurry) Slurryflex + CLX custom formulation
CLX ceramic	CLX standard (92% alumina, with 1x wear resistance and 1x fracture toughness) CLX-A95 (95% alumina, with 2x wear resistance and 1x fracture toughness) CLX-A99 (99% alumina, with 4x wear resistance and 1.1x fracture toughness) CLX-ZTA (zirconia-toughened alumina, with 4.4x wear resistance and 1.4x fracture toughness) CLX-ARZ (alumina-reinforced zirconia, with 6.6x wear resistance and 2x fracture toughness)
Reinforcement	Synthetic fabric and wire helix
Outer cover	UV, ozone, and abrasion-resistant rubber
End connections	Carbon steel (painted, galvanised, custom) Stainless steel (SS304, SS316) Exotic alloy

Standard Properties

DN	Hose Size		CLX Ceramic Thickness		Vacuum Rating	Standard Working Pressure		Max Working Pressure		Min Bend Radius
	in	mm	Min/Std (mm)	Max (mm)	%	kPa	PSI	kPa	PSI	
80	3	76	4.5	4.5	100	1000	150	5000	725	Contact us
100	4	102	4.5	6	100	1000	150	5000	725	Contact us
125	5	127	4.5	6	100	1000	150	5000	725	Contact us
150	6	152	4.5	6	100	1000	150	5000	725	Contact us
200	8	203	4.5	12	100	1000	150	5000	725	Contact us
250	10	254	4.5	12	100	1000	150	5000	725	Contact us
300	12	304	4.5	12	100	1000	150	5000	725	Contact us
350	14	355	4.5	12	100	1000	150	5000	725	Contact us
400	16	405	4.5	12	100	1000	150	5000	725	Contact us
450	18	457	4.5	12	100	1000	150	5000	725	Contact us
500	20	508	4.5	12	100	1000	150	5000	725	Contact us
550	22	565	4.5	12	100	1000	150	5000	725	Contact us
600	24	610	4.5	12	100	1000	150	5000	725	Contact us
650	26	660	4.5	12	100	700	100	4000	580	Contact us
700	28	711	4.5	12	100	700	100	4000	580	Contact us
750	30	762	4.5	12	100	700	100	4000	580	Contact us
800	32	813	4.5	12	100	700	100	3000	435	Contact us
900	36	914	4.5	12	100	700	100	3000	435	Contact us
1000	40	1016	4.5	12	100	700	100	3000	435	Contact us
1100	44	1118	4.5	12	100	700	100	2500	362	Contact us
1200	48	1219	4.5	12	100	700	100	2500	362	Contact us
1300	52	1321	4.5	12	100	700	100	2500	362	Contact us
1400	56	1422	4.5	12	100	700	100	2500	362	Contact us
1500	60	1524	4.5	12	100	700	100	2500	362	Contact us

Notes

1. Product is fully customisable and available in non-standard specifications on request.
2. CLX internal coverage for "cross-section" refers to CLX tile pad coverage around the hose inside diameter (i.e. X degrees, from Y o'clock to Z o'clock).
3. CLX internal coverage for "longitudinal" refers to CLX tile pad coverage down the length of the hose (i.e. starting X mm from end 1 and finishing Y mm from end 2).
4. Buoyancy rating % is calculated based on SG of internal fluid, SG of external fluid, mass of hose, and volume of hose.
5. Safety factor is the ratio of working pressure to minimum rated burst pressure.