

# Beaver Small Bore Ball Valve

A general service ball valve for pressures up to 69 bar (1000 psi) WOG suitable for use in water, oil, gas, and petrochemical applications.

**B01, B02, B03, B04**



# Beaver B01–B04 Small Bore Ball Valve



Beaver B03 Three-Piece Ball Valve

This range of Beaver ball valves is suitable for either isolation or flow control depending on the body design. The stainless steel body is available in a one-piece, two-piece, or three-piece configuration with threaded or socket weld end connections.

This ball valve has a resilient seat for a bubble-tight shut-off with zero leakage. Available from DN 8–100, it covers most requirements in water, oil, gas and chemical process applications.

## KEY FEATURES

- Available in one-piece, two-piece, and three-piece body design.
- Three-piece design available with ISO 5211 actuator mounting flange.
- Stainless steel construction provides corrosion resistance and durability.
- Blow-out proof stem prevents the stem from being ejected from the body in the unlikely event of valve failure.
- Lockable lever prevents accidental activation of a valve under maintenance.

Need technical advice? Our friendly specialists are here to help.

B01

One-Piece Reduced Port Ball Valve

Tables 1-2. B01 Specifications

Technical Specifications		Material Specifications	
Size range	DN8-80 (¼-3")	1	SeatPTFE, RPTFE
Pressure class	69 bar (1000 psi)	2	BallS304, S316
Temperature range	-40°C to +180°C	3	BodyWCB, CF8, CF8M
End connections	Threaded BSP	4	Thrust washerPTFE, RPTFE
	Threaded NPT	5	StemS304, S316
	Socket weld	6	PackingPTFE, RPTFE
Actuator options	Lever	7	GlandS201, S304
	Gear operated	8	NutS201, S304
	Pneumatic	9	WasherS201, S304
	Hydraulic	10	RetainerS304, S316
	Electric	11	HandleS201, S304
		12	Handle coverPVC
		13	LockS201, S304

Diagram. B01 Parts

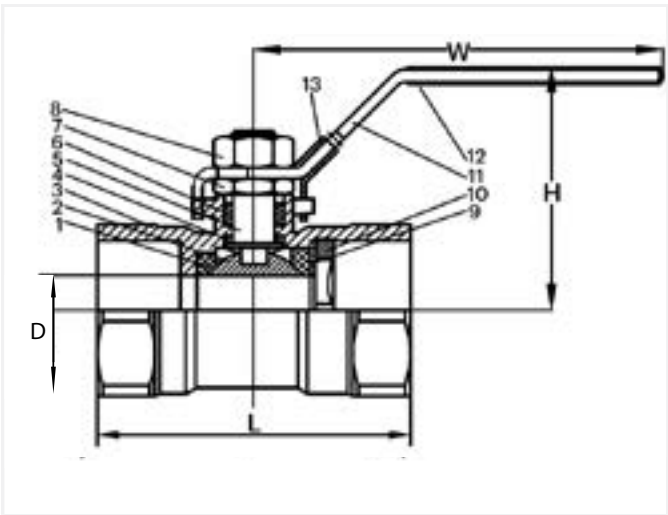


Diagram. B01 Pressure-Temperature Chart

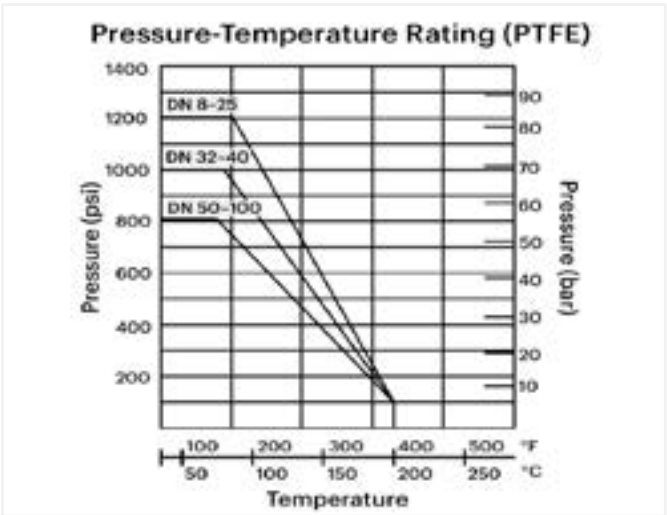


Table 3. B01 Dimensions

Product Dimensions (mm)										
Size	8	10	15	20	25	32	40	50	65	80
D	5	7	9.2	12.5	15	20	25	32	38	50
H	33	35	40	44	51	57	64	70	70	77
W	68.5	90	98	98	111	111	139	139	189	189
L	39	44	57	59	71	78	83	100	128	153

B02

Two-Piece Full Port Ball Valve

Tables 1–2. B02 Specifications

Technical Specifications		Material Specifications	
Size range	DN8–100 (¼–4")	1	BodyCF8, CF8M
Pressure class	69 bar (1000 psi)	2	CapCF8, CF8M
Temperature range	-40°C to +180°C	3	SeatPTFE, RPTFE
End connections	Threaded BSP	4	Joint gasketPTFE, RPTFE
	Threaded NPT	5	Thrust washerPTFE, RPTFE
	Socket weld	6	PackingPTFE, RPTFE
Actuator options	Lever	7	GlandS201, S304
	Gear operated	8	NutS201, S304
	Pneumatic	9	StemS304, S316
	Hydraulic	10	BallS304, S316
	Electric	11	HandleS201, S304
		12	Handle coverPVC
		13	LockS201, S304

Diagram. B02 Parts

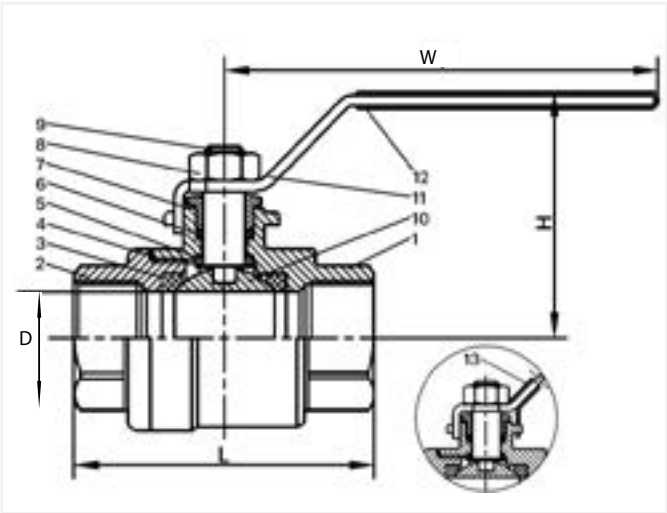


Diagram. B02 Pressure-Temperature Chart

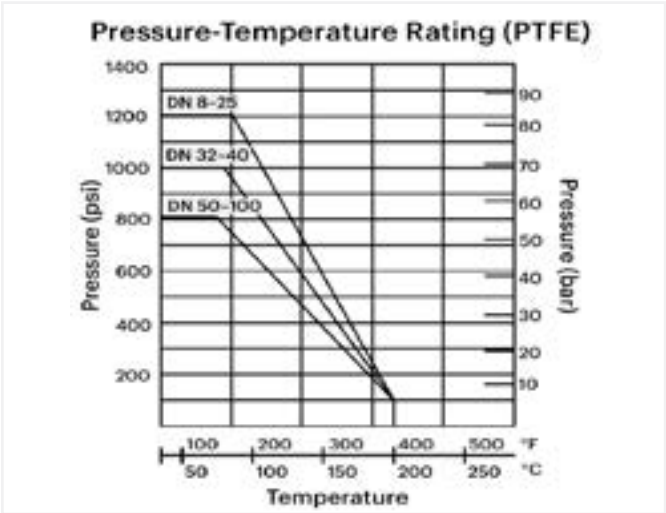


Table 3. B02 Dimensions

Product Dimensions (mm)											
Size	8	10	15	20	25	32	40	50	65	80	100
D	12.5	12.5	15	20	25	32	38	50	65	76	94
H	45	45	46	51	65	69	85	93	116	125	166
W	103	103	103	126	144	144	189	189	224	224	295
L	51	51	63	74	86	98	106	122	159	182	226

B03

Three-Piece Full Port Ball Valve

Tables 1–2. B03 Specifications

Technical Specifications		Material Specifications	
Size range	DN8–100 (¼–4")	1	BodyWCB, CF8, CF8M
Pressure class	69 bar (1000 psi)	2	BallS304, S316
Temperature range	-40°C to +180°C	3	BoltS201, S304
End connections	Threaded BSP	4	NutS201, S304
	Threaded NPT	5	PackingPTFE, RPTFE
	Socket weld	6	StemS304, S316
Actuator options	Lever	7	GlandS201, S304
	Gear operated	8	Spring washerS201, S304
	Pneumatic	9	NutS201, S304
	Hydraulic	10	CapWCB, CF8, CF8M
	Electric	11	SeatPTFE, RPTFE
		12	Thrust washerPTFE, RPTFE
		13	HandleS201, S304
		14	Handle coverPVC
		15	LockS201, S304

Diagram. B03 Parts

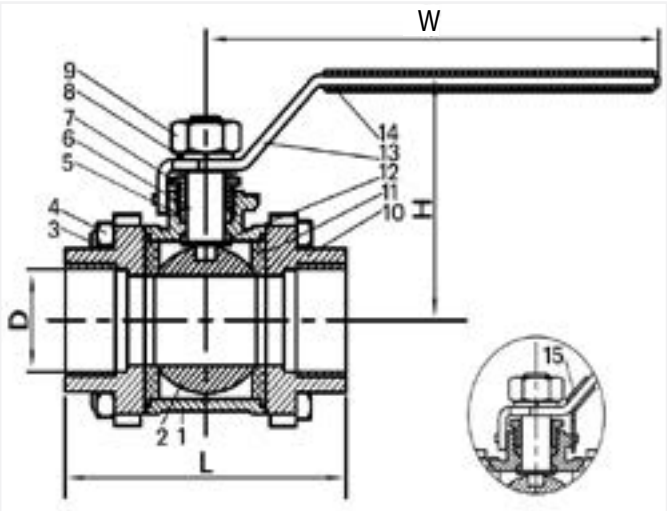


Diagram. B03 Pressure-Temperature Chart

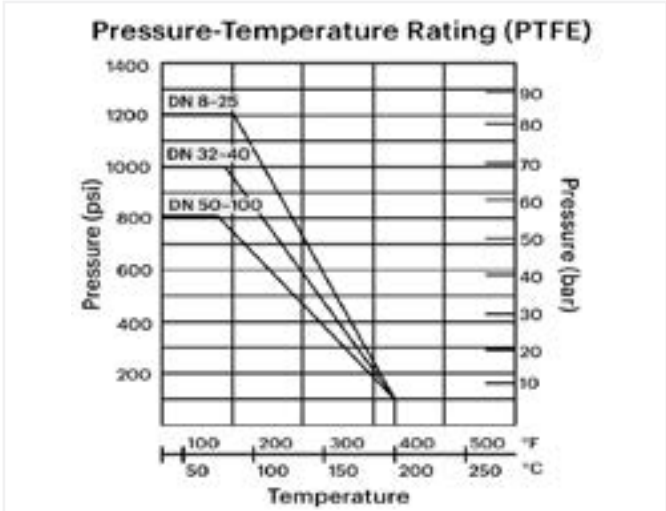


Table 3. B03 Dimensions

Product Dimensions (mm)											
Size	8	10	15	20	25	32	40	50	65	80	100
D	12.5	12.5	15	20	25	32	38	50	65	76	94
H	48	48	50	52	65	70	85	93	116	125	180
W	105	105	105	126	144	144	189	189	224	224	251
L	72	72	72	80	85	105	113	132	170	186	220

B04

Three-Piece Full Port Ball Valve with ISO Mounting Pad

Tables 1–2. B04 Specifications

Technical Specifications		Material Specifications		
Size range	DN8–100 (¼–4")	1	Body	CF8, CF8M
Pressure class	69 bar (1000 psi)	2	Ball	S304, S316
Temperature range	-40°C to +180°C	3	Bolt	S201, S304
End connections	Threaded BSP	4	Nut	S201, S304
	Threaded NPT	5	Packing	PTFE, RPTFE
	Socket weld	6	Stem	SS304, SS316
Actuator options	Lever	7	Gland	S201, S304
	Gear operated	8	Nut	S201, S304
	Pneumatic	9	Cap	CF8, CF8M
	Hydraulic	10	Seat	PTFE, RPTFE
	Electric	11	Thrust washer	PTFE, RPTFE
		12	Handle	S201, S304
		13	Handle cover	PVC
		14	Lock	S201, S304

Diagram. B04 Parts

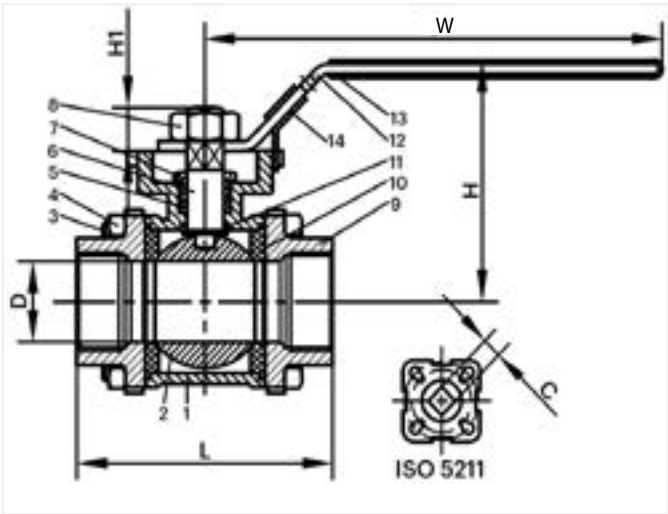


Diagram. B04 Pressure-Temperature Chart

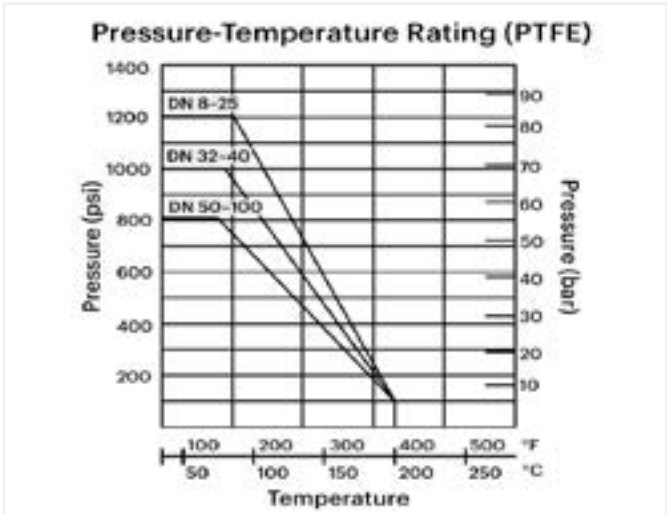


Table 3. B04 Dimensions

Product Dimensions (mm)											
Size	8	10	15	20	25	32	40	50	65	80	100
D	11	12.5	15	20	25	32	38	50	65	76	94
H	69	69	72	78	90	95	105	122	155	164	168
W	140	140	140	140	162	162	188	188	233	233	233
H1	38.4	38.4	42	48	55	60	70	85	109	118	115.5
h	9	9	9	9	11	11	15	15	20	20	20
ISO5211	F03	F03	F03	F03	F04	F04	F05	F05	F07	F07	F07
	F04	F04	F04	F04	F05	F05	F07	F07	F10	F10	F10
L	64	64	72	80	85	105	113	132	170	186	226





# We're here to help

We know it's important for you to talk to someone who knows their stuff. So if you have technical questions or need help choosing the right products, talk to our team. We'll walk you through our proven problem solving process.

## 1. Tell us what you need.

Tell us about your project. What do you want to achieve? What problems do you need to overcome? Let's work back from there.

## 2. Choose the right solution.

Weigh up the options. We'll do the analysis, discuss the options with you, and make a recommendation—the choice we'd make in your shoes.

## 3. Get the job done.

Complete your project, with the right products, on time and to spec. We've got your back all the way, with support during installation and commissioning.

Tap into our expertise and talk to our friendly, expert team.

# B | E | A | V | E | R

To request a quote or explore our product range, visit [beaverprocess.com.au](https://beaverprocess.com.au)

Phone: 1300 295 799 | Email: [sales@beaverprocess.com.au](mailto:sales@beaverprocess.com.au)