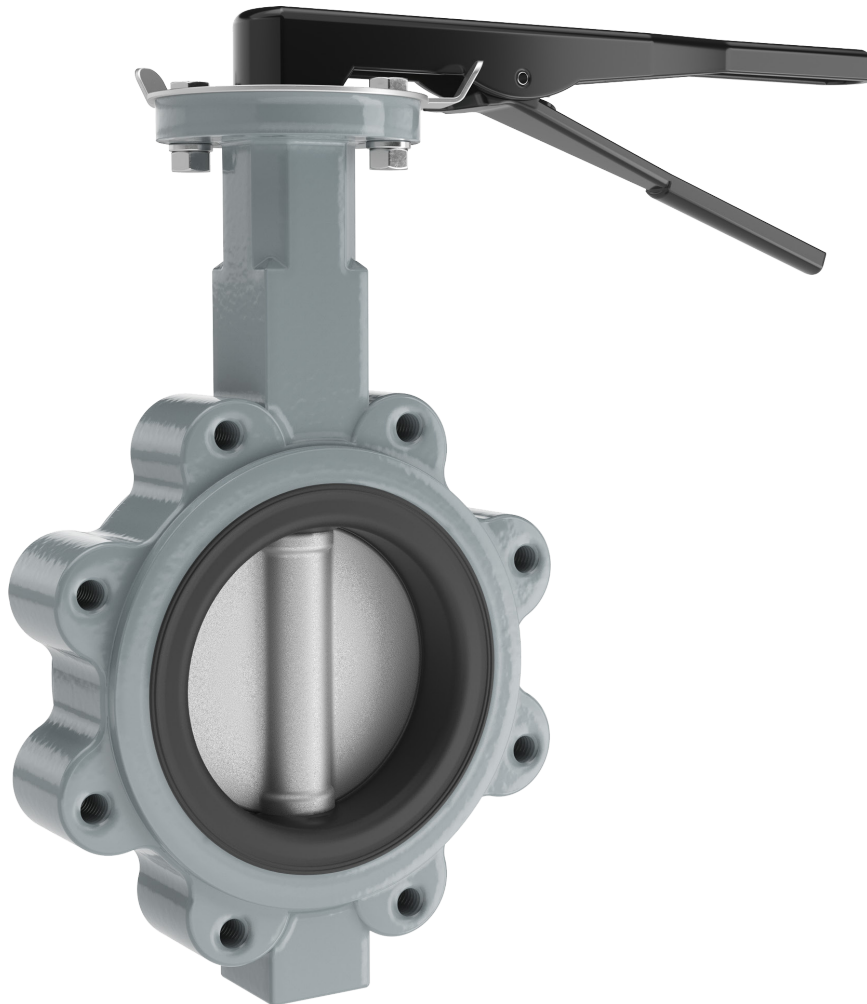


BUTTERFLY VALVES

Beaver Concentric Butterfly Valve

A resilient-seated butterfly valve for utility service that allows bidirectional flow and tight shut-off.

F01, F02



B | E | A | V | E | R

beaverprocess.com.au

Beaver F01–F02 Concentric Butterfly Valve



Beaver F02 Lugged Butterfly Valve

This Beaver butterfly valve series has a resilient elastomer seat that protects the valve body from coming into contact with the media. The rounded disc closes with zero leakage at full pressure rating in either direction.

This is a lightweight and compact valve that requires low-torque operation. It comes in either a wafer or lugged body, both of which are suitable for isolation. The lugged valve can be used for end-of-line services.

KEY FEATURES

- Disc provides bubble-tight shut-off of water, liquids, air, or inert gas.
- Disc and resilient seat isolate the flowing media from the body.
- Moulded secondary stem seal prevents media from leaking into the stem area.
- Available from DN50–600, with a pressure rating of 16 bar up to DN300 and 10 bar to DN600.
- Can be manually operated using a lever with a notch plate, gear operated with a handwheel, or actuated through an ISO 5211 top mount with a square drive stem.

Need technical advice? Our friendly specialists are here to help.

F01

DN 50–600 Concentric Wafer Butterfly Valve

Tables 1–2. F01 DN 50–600 Specifications

Technical Specifications	
Size	DN50–1500 (2–60")
Pressure class	DN50–300: 16 bar (232 psi) DN350–600: 10–16 bar (145–231 psi)
Actuator interface	ISO 5211 top mount with square drive stem
End connections	Wafer (ASME Class 125/150 and AS2129 Table D/E)
Face to face	EN558-1, Table 20
Manual operator	Lever with notch plate Gear operator

Material Specifications	
Body (1)	Cast iron
Seat (2)	EPDM
Disc (4)	316 stainless steel
Stem (5)	316 stainless steel
Other materials available on request	

Diagram. F01 DN 50–600 Parts

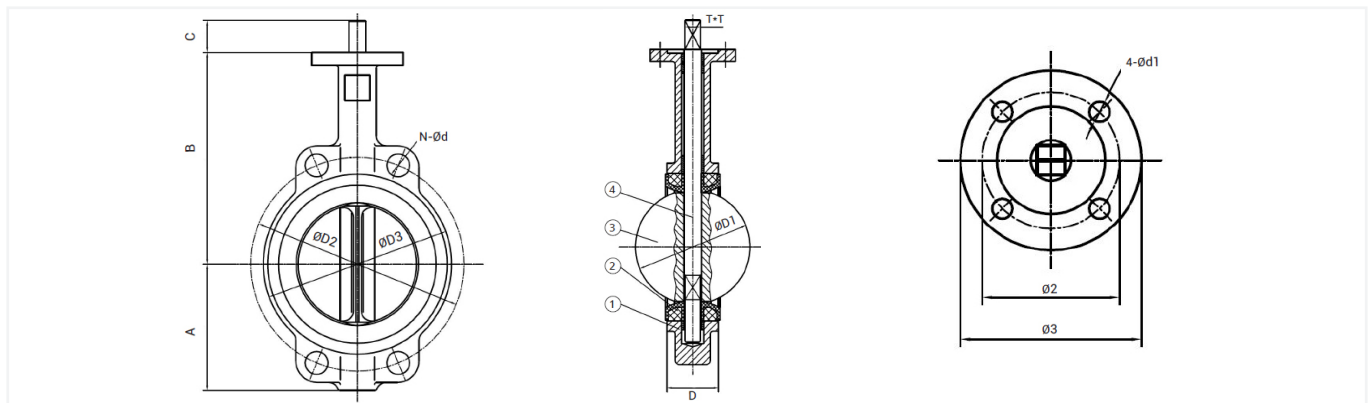


Table 3. F01 DN 50–600 Dimensions

Product Dimensions (mm)														
Size	50	65	80	100	125	150	200	250	300	350	400	450	500	600
A	80	89	95	114	127	139	175	203	242	267	309	328	360	456
B	161	175	181	200	213	226	260	292	337	368	400	422	480	562
C	29	29	29	29	29	29	41	41	41	41	51	51	51	66
D	43	46	46	52	56	56	60	68	78	78	86	105	130	152
ØD1	52.6	64.3	78.8	104	123.3	155.7	202.4	250.4	301.5	333.3	389.6	440.5	491.6	592.5
ØD3	100	120	127	156	190	212	268	325	376	436	488	539	593	693
AS2129 D/E	114	127	146	178	210	235	292	356	406	470	521	584	641	756
	4-18	4-18	4-18	4-18/ 8-18	8-18	8-22	8-22	8-22/ 12-22	12-26	12-26	12-26	12-26/ 16-26	16-26	16-33
150LB	120.6	139.7	152.4	190.5	215.9	241.3	298.4	361.9	431.8	476.2	539.7	577.8	635	749.3
	4-19	4-19	4-19	8-19	8-22.4	8-22.4	8-22.4	12- 25.4	12- 25.4	12- 28.4	16- 28.4	16- 31.8	20- 31.8	20- 35.1
ISO 5211	F05	F05	F05	F07	F07	F07	F10	F10	F10	F10	F14	F14	F14	F16
Ø2	50	50	50	70	70	70	102	102	102	102	140	140	140	165
Ø3	65	65	65	90	90	90	125	125	125	125	175	175	175	210
4-Ød1	7	7	7	10	10	10	12	12	12	12	18	18	18	22
T*T	9*9	9*9	9*9	11*11	14*14	14*14	17*17	22*22	22*22	22*22	27*27	27*27	36*36	36*36

F01

DN 700–1500 Concentric Wafer Butterfly Valve

Tables 1–2. F01 DN 700–1500 Specifications

Technical Specifications	
Size	DN700–1500 (28–60")
Pressure class	10–16 bar (145–231 psi)
Temperature range	-10°C to +120°C (EPDM liner) -10°C to +82°C (BUNA-N liner)
Actuator interface	ISO 5211 top mount with square drive stem
Face to face	EN1092 PN10 and PN16
Manual operator	Gear operator

Material Specifications	
Body	Ductile iron
Body seat	Rubber
Shaft	Stainless steel
Disc	Ductile iron
Shaft bush	Brass
Shaft sealing	O-ring
Shaft retainer	Stainless steel
Bottom plate	Ductile iron

Diagram. F01 DN 700–1500 Parts

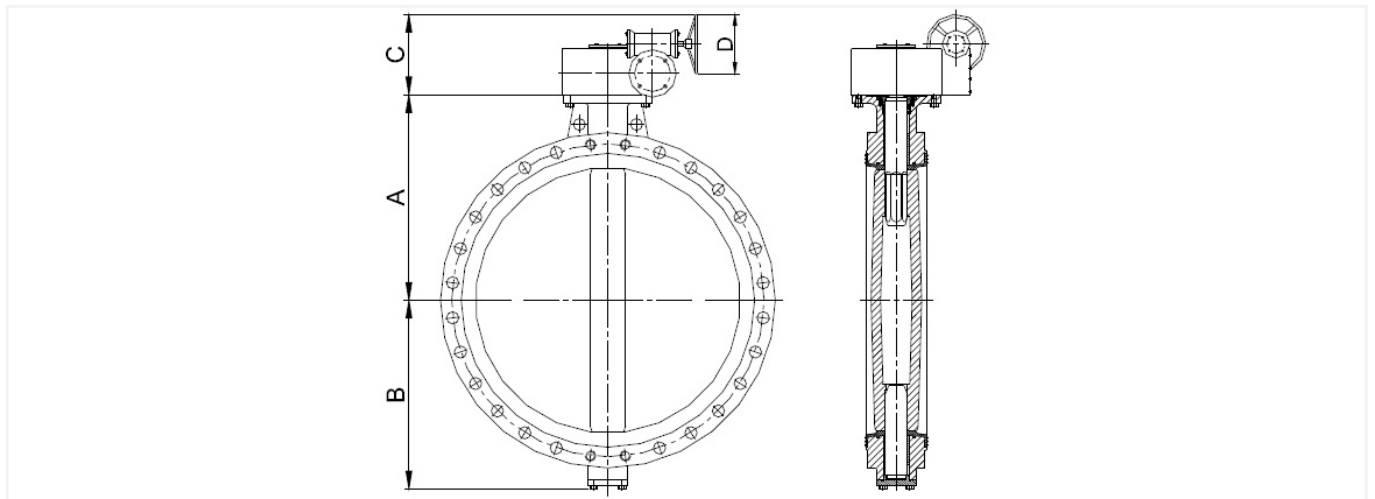


Table 3. F01 DN 700–1500 Dimensions

Product Dimensions (mm)										
Size	700	750	800	900	1000	1050	1200	1300	1400	1500
L	165	190	190	203	216	216	254	279	279	318
	292	318	318	330	410	410	470	530	530	600
A	490	525	540	615	675	705	820	880	920	1010
B	585	630	610	690	740	775	855	935	955	1070
C	500	500	505	500	500	500	580	580	580	580
Mounting flange	F25						F35			

F02

Concentric Lugged Butterfly Valve

Tables 1–2. F02 Specifications

Technical Specifications		Material Specifications	
Size	DN50–600 (2–24")	Body (1)	Cast iron
Pressure class	16 bar (DN50–300) 10 bar and 16 bar (DN350–600)	O-ring (2)	NBR (nitrile)
Actuator interface	ISO 5211 top mount with square drive stem	Stem (3)	410 stainless steel
End connections	Lugged (ASME Class 125/150 Table E and AS2129 Table D)	Disc (4)	316 stainless steel
Face to face	EN558-1, Table 20	Seat (5)	EPDM
Manual operator	Lever with notch plate Gear operator with handwheel	Other materials available on request	

Diagram. F02 Parts

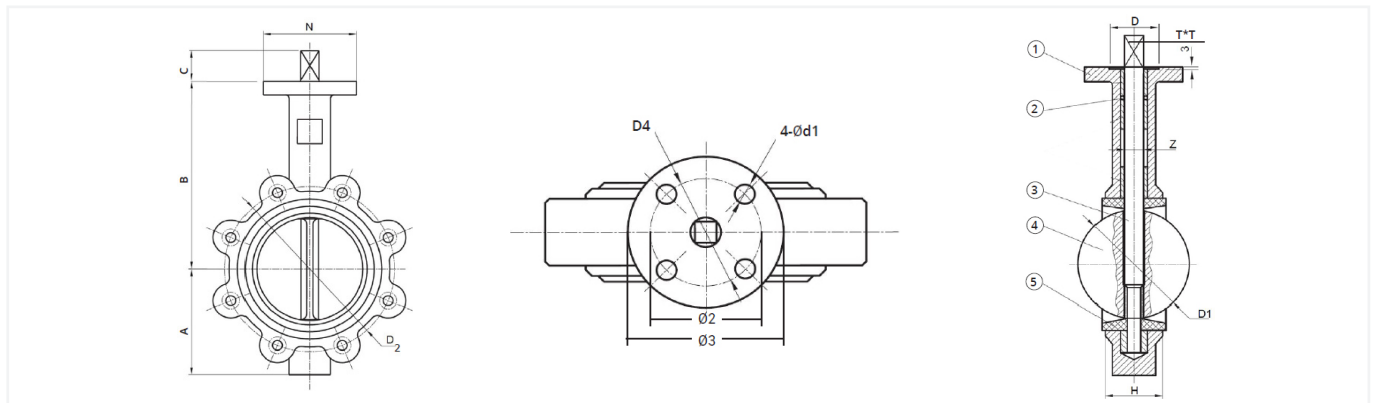


Table 3. F02 Dimensions

Product Dimensions (mm)														
Size	50	65	80	100	125	150	200	250	300	350	400	450	500	600
A	80	89	95	114	127	139	175	203	242	267	309	328	360	456
B	161	175	181	200	213	226	260	292	337	368	400	422	480	562
C	29	29	29	29	29	29	41	41	41	41	51	51	51	66
D	43	46	46	52	56	56	60	68	78	78	86	105	130	152
D1	52.6	64.3	78.8	104	123.3	155.7	202.4	250.4	301.5	333.3	389.6	440.5	491.6	592.5
H	43	46	46	52	56	56	60	68	78	78	84	103	127	150
150LB	120.6	139.7	152.4	190.5	215.9	241.3	298.4	361.9	431.8	476.2	539.7	577.8	635	749.3
	4–19	4–19	4–19	8–19	8–22.4	8–22.4	8–22.4	12–25.4	12–25.4	12–28.4	16–28.4	16–31.8	20–31.8	20–35.1
ISO 5211	F05	F05	F05	F07	F07	F07	F10	F10	F10	F10	F14	F14	F14	F16
Ø2	50	50	50	70	70	70	102	102	102	102	140	140	140	165
Ø3	65	65	65	90	90	90	125	125	125	125	175	175	175	210
4-Ød1	7	7	7	10	10	10	12	12	12	12	18	18	18	22
T*T	9*9	9*9	9*9	11*11	14*14	14*14	17*17	22*22	22*22	22*22	27*27	27*27	36*36	36*36



We're here to help

We know it's important for you to talk to someone who knows their stuff. So if you have technical questions or need help choosing the right products, talk to our team. We'll walk you through our proven problem solving process.

1. Tell us what you need.

Tell us about your project. What do you want to achieve? What problems do you need to overcome? Let's work back from there.

2. Choose the right solution.

Weigh up the options. We'll do the analysis, discuss the options with you, and make a recommendation—the choice we'd make in your shoes.

3. Get the job done.

Complete your project, with the right products, on time and to spec. We've got your back all the way, with support during installation and commissioning.

Tap into our expertise and talk to our friendly, expert team.

B | E | A | V | E | R

To request a quote or explore our product range, visit beaverprocess.com.au

Phone: 1300 295 799 | Email: sales@beaverprocess.com.au