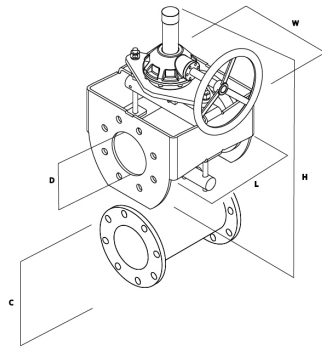
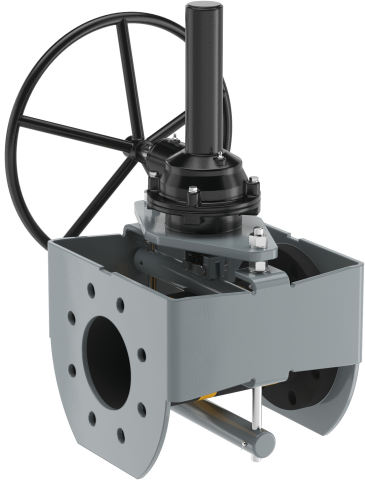


PB-SERIES

Double-End Open-Frame Pinch Valve

Custom designed and manufactured in Australia. Standard and custom sleeve sizes available to match pipeline bore in slurry systems. Lowest pressure drop slurry valve available. Replaceable sleeve allows lowest lifetime cost-of-ownership. Premium quality slurry isolation and control valve to suit the most arduous applications.

Standard applications include transfer of abrasive slurries, mineral processing plants, tailings lines, sand and gravel. Also available in custom sleeve materials for specialty applications, such as fluids or slurries containing chemicals, acids and hydrocarbons.

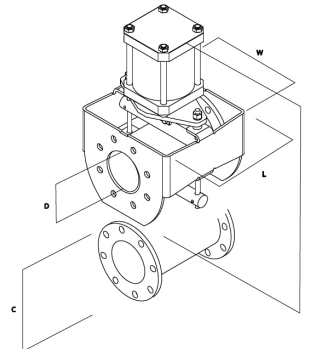


Technical Specifications

Function	Isolation (on/off), control (modulating)
Valve Size	DN25-600 (1-24") (consult factory for larger)
Sleeve Size	Standard, DN25-600 (1-24") (consult factory for custom ID to match pipeline bore)
Face-To-Face	Manufacturer's standard (consult factory for special requirements)
End Connections	Flanged
Flange Drillings	AS2129, ASME, BS, SABS, JS, DIN, custom
Pressure Rating	10 bar standard (0-30 bar available on request)
Safety Factor	4:1 for sleeve minimum burst pressure as standard (consult factory for special requirements)
Temperature Rating	-30°C to +75°C as standard (consult factory for special requirements)
Operator	Manual (handwheel, gearbox), actuator (pneumatic, hydraulic, electric)
Options	Wear indicator, anti-vacuum sleeve tabs (consult factory for special requirement)

Material Specifications

Sleeve Liner	Slurryflex Grade-A Rubber, proprietary compound for wear performance in abrasive slurries (consult factory for other specialty applications)
Sleeve Reinforcement	Synthetic fabric
Sleeve Cover	Proprietary rubber compound for UV, ozone and abrasion resistance
Body	Painted carbon steel (consult factory for special requirement)



Valve Dimensions

Valve Size (D)		Std. Sleeve ID	Std. Liner Thickness	Std. Working Pressure		Max. Working Pressure		Safety Factor	Length	Width	Height (Manual)	Height (Pneumatic)	Clearance Req
DN	inch	mm	mm	kPa	PSI	kPa	PSI	ratio	mm	mm	mm	mm	mm
25	1	25	6	1000	150	Consult Factory		4:1	116	160	320	430	115
40	1.5	38	6	1000	150	Consult Factory		4:1	170	180	344	460	140
50	2	51	6	1000	150	Consult Factory		4:1	170	180	355	480	160
65	2.5	64	6	1000	150	Consult Factory		4:1	170	215	439	580	185
80	3	76	6	1000	150	Consult Factory		4:1	200	255	476	630	200
100	4	102	6	1000	150	Consult Factory		4:1	250	305	546	685	230
125	5	127	6	1000	150	Consult Factory		4:1	312	410	650	745	260
150	6	152	6	1000	150	Consult Factory		4:1	364	410	715	795	290
200	8	203	6	1000	150	Consult Factory		4:1	500	480	845	860	350
250	10	254	9	1000	150	Consult Factory		4:1	626	560	1025	1140	410
300	12	304	9	1000	150	Consult Factory		4:1	750	640	1235	1220	490
350	14	355	9	1000	150	Consult Factory		4:1	880	730	1410	1360	540
400	16	405	12	1000	150	Consult Factory		4:1	995	820	1600	1610	600
450	18	457	12	1000	150	Consult Factory		4:1	1125	880	1765	1710	650
500	20	508	12	1000	150	Consult Factory		4:1	1250	950	2100	2100	710
600	24	610	12	1000	150	Consult Factory		4:1	1500	1075	2400	2400	840