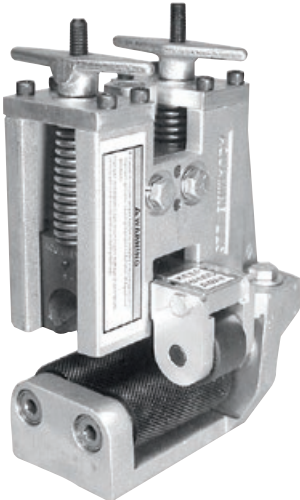


Field Fabrication Cut Grooving Tool for HDPE Pipe

CG3100, CG3300, CG3500 (HDPE)

[Download publication 24.06](#) for complete information

- Cut grooves 8–36" IPS and 250–900 mm ISO HDPE pipe
- For grooving of SDR 7–21 pipe
- The tool mounts on the exterior pipe wall and cuts and grooves the end of the pipe in a single operation
- The CG3100 and CG3300 tools connect directly to a 120 volt, 50/60 hertz, 20 amp power source (An optional 220 volt, single phase, 50/60 hertz model is also available)
- The CG3500 tool connects directly to a 220 volt, single phase, 50/60 hertz, 20 amp power source
- Weight: CG3100: 430 lbs. | 195 kg, CG3300: 580 lbs. | 263 kg, CG3500: 715 lbs. | 324 kg



Aquamine™ Grooving Tool

APG

[Download publication 24.01](#) for complete information

- Prepares 4–12" | DN100–DN300 *Aquamine* pipe
- Manually operated tool used for producing a cut spline groove and beveled end on *Aquamine* PVC pipe
- Orbital tool which is rotated around a stationary, secured pipe
- May be operated on pipe held in a pipe vise or on supported in-place piping that is depressurized and drained
- Weight: 13 lbs. | 5.9 kg