



## Vic-Ring Coupling

### STYLE 41

[Download publication 16.04](#) for complete information

- Provided with a variety of ring options to maintain full pipe wall thickness for abrasive systems
- Sizes from 30–66" | DN750–DN1650
- Pressures up to 90 psi | 621 kPa | 6 bar
- For AGS *Vic-Ring* products, see pg. 29
- Regional availability, contact [Victaulic](#) for details



## Vic-Ring Coupling

### STYLE 44

[Download publication 16.05](#) for complete information

- Provided with a variety of ring options to maintain full pipe wall thickness for abrasive systems
- Sizes from 4–60" | DN100–DN1500
- Pressures up to 175 psi | 1207 kPa | 12 bar
- For AGS *Vic-Ring* products, see pg. 29
- Regional availability, contact [Victaulic](#) for details



## AGS Rigid Coupling with *Vic-Ring* STYLE W07

[Download publication 16.11](#) for complete information

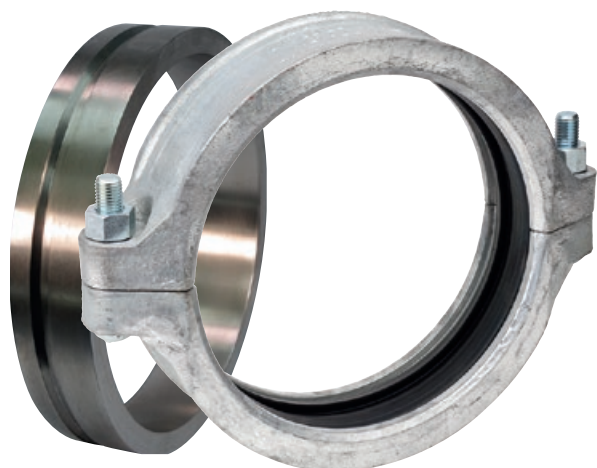
- Coupling installs on the supplied ring to maintain full pipe wall thickness on abrasive and/or corrosive systems
- Sizes from 14–50" | DN350–DN1250
- Pressures up to 350 psi | 2413 kPa | 24 bar
- For OGS *Vic-Ring* products, see pg. 6
- Regional availability, contact [Victaulic](#) for details



## AGS Flexible Coupling with *Vic-Ring* STYLE W77

[Download publication 16.12](#) for complete information

- Coupling installs on the supplied ring to maintain full pipe wall thickness on abrasive and/or corrosive systems
- Sizes from 14–78" | DN350–DN1950
- Pressures up to 350 psi | 2413 kPa | 24 bar
- For OGS *Vic-Ring* products, see pg. 6
- Regional availability, contact [Victaulic](#) for details



## AGS Rigid Coupling with *Vic-Ring* STYLE W89

[Download publication 16.15](#) for complete information

- Coupling installs on the supplied ring to maintain full pipe wall thickness on abrasive and/or corrosive systems
- Galvanized coated ductile iron coupling
- Sizes from 14–24" | DN350–DN600
- Pressures up to 700 psi | 4830 kPa | 48 bar
- Regional availability, contact [Victaulic](#) for details



## Certifications/Listings:



## High Pressure Double Grooved Coupling

STYLE 808

[Download publication 15.01](#) for complete information

- Double-bolted coupling for use with Schedule 80 or heavier steel pipe
- For installation on pipe ends with double cut grooves, [download publication 25.04](#) for complete information
- Sizes from 6–12" | DN150–DN300
- Pressures up to 4000 psi | 27579 kPa | 275 bar
- Regional availability, contact [Victaulic](#) for details



## High Pressure Ring Coupling

STYLE 809N

[Download publication 15.03](#) for complete information

- Designed for high pressure applications, hydraulic applications, and abrasive services
- Coupling engages directly onto restraint rings (supplied with coupling) welded to the O.D. of the pipe
- For schedule 80 or heavier carbon steel pipe
- Sizes from 4–10" | DN100–DN250
- Pressures up to 3000 psi | 20684 kPa | 206 bar



## Composite Flexible Coupling

STYLE 171

[Download publication 06.22](#) for complete information

- Flexible pipe joint which allows for expansion, contraction and deflection
- For corrosive applications such as reverse osmosis systems
- For use on Victaulic PVC pipe utilizing Victaulic OGS roll or cut groove profile
- Sizes from 1½–4" | DN40–DN100
- Pressures up to 150 psi | 1034 kPa | 10 bar
- For stainless steel and FRP applications, contact [Victaulic](#)