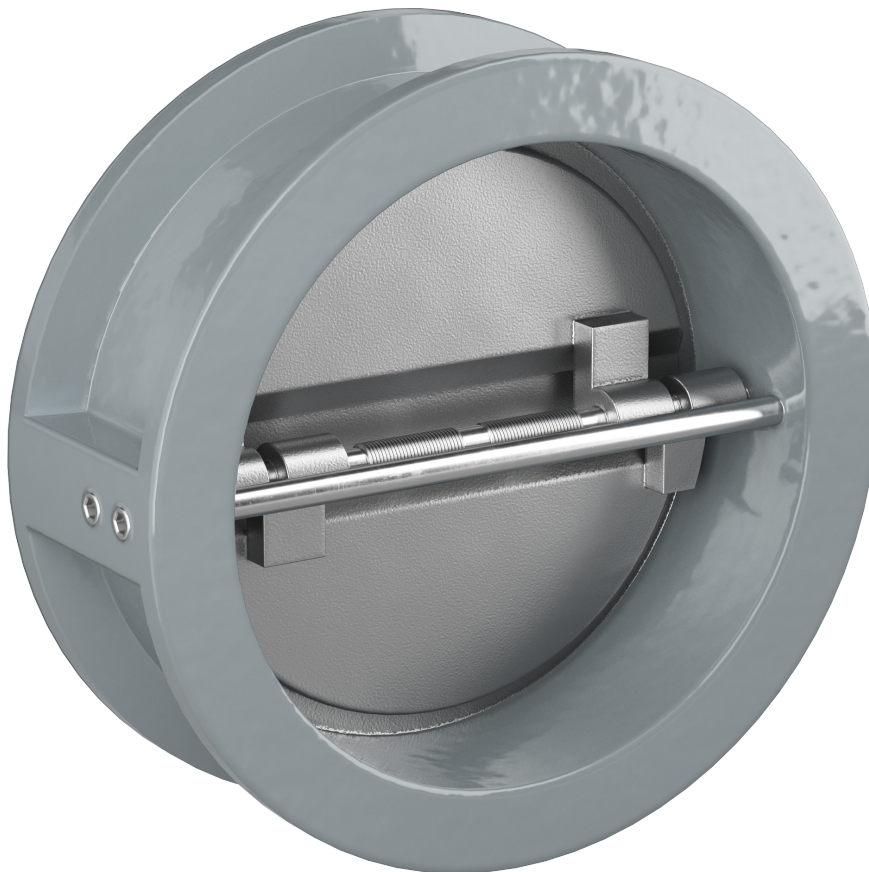


CHECK VALVES

# Beaver Resilient Seated Dual Plate Check Valve

A compact non-return valve rated to 10 or 16 bar with two spring-loaded plates and soft seat.

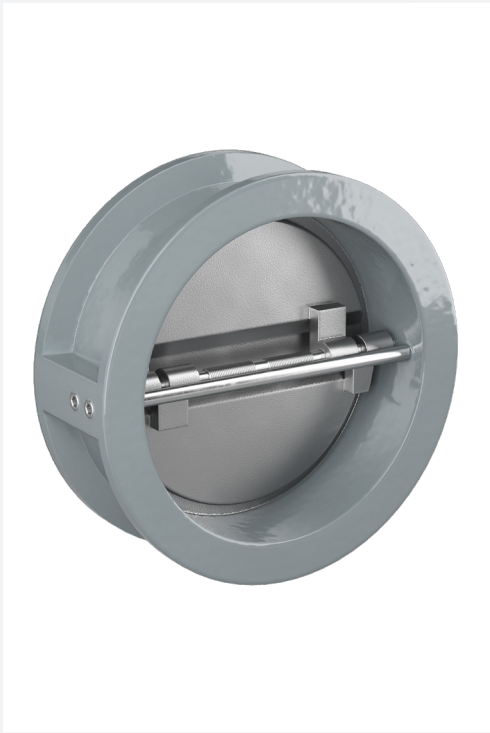
C11, C12



**B | E | A | V | E | R**

[beaverprocess.com.au](http://beaverprocess.com.au)

## Beaver C11-C12 Resilient Seated Dual Plate Check Valve



Beaver C11 Dual Plate Check Valve

The Beaver Resilient Seated Dual Plate Check Valve has a one-piece body that is lightweight yet strong for a long and trouble-free service. It has two spring-assisted discs that open towards the flow direction based on the force of the fluid. The self-shutting discs close as flow drops, efficiently preventing backflow in a piping system.

The discs only travel a very short distance to open and close, ensuring minimal fluid resistance and smooth flow through the valve. The check valve eliminates water hammer with spring-assisted discs that close quickly and aren't dependent on reverse pressure to shut. Soft seats provide further leakage prevention.

Use this Beaver dual plate check valve to protect equipment or the piping system from contaminated and unwanted reverse flow.

### KEY FEATURES

- One-way, normally closed valve that doesn't require external control.
- Stainless steel springs provide corrosion resistance to help extend the valve's service life.
- Spring-assisted closure eliminates slamming and reduces wear and tear of the seat.
- Resilient seat provides positive sealing and prevents leakage.
- Compact wafer design has a small footprint that is easy to install in horizontal or vertical piping orientations.

Need technical advice? Our friendly specialists are here to help.

## C11-C12

### Resilient Seated Dual Plate Check Valve

Tables 1-2. C11-C12 Specifications

Technical Specifications	
Brand	Beaver
Model	C11 (16 bar) C12 (10 bar)
Size range	DN50-600 (2-24")
Pressure class	DN50-300: 16 bar (232 psi) DN350-600: 10 bar (145 psi)
End connections	Wafer to suit AS2129 Table E
Face to face	EN558-1, Table 16

Material Specifications	
Body	Cast iron, CF8M stainless steel, ductile iron
Disc	CF8M stainless steel
Stem	316 stainless steel
Spring	316 stainless steel
Seal	EPDM, Viton, Buna, metal
Bushing	PTFE

Diagram. C11-C12 Parts

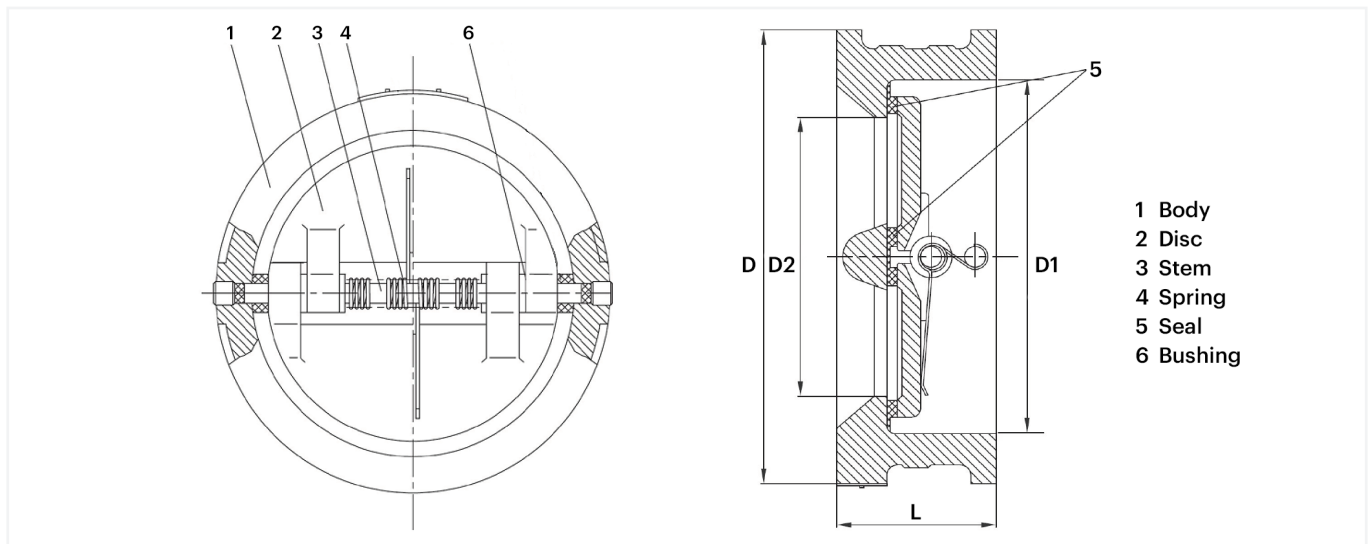


Table 3. C11-C12 Dimensions

Product Dimensions					
Size (DN)	L (mm)	D (mm)	D1 (mm)	D2 (mm)	Weight (kg)
50	43	98	65	40	1.5
65	46	110	80	60	2.4
80	64	128	94	70	3.6
100	64	156	117	88	5.7
125	70	187	145	115	7.3
150	76	213	170	134	9
200	89	267	224	182	17
250	114	328	265	220	26
300	114	375	310	260	55
350	127	448	360	298	55
400	140	498	410	350	75
450	152	562	450	385	107
500	152	619	505	438	111
600	178	727	624	538	165



# We're here to help

We know it's important for you to talk to someone who knows their stuff. So if you have technical questions or need help choosing the right products, talk to our team. We'll walk you through our proven problem solving process.

## 1. Tell us what you need.

Tell us about your project. What do you want to achieve? What problems do you need to overcome? Let's work back from there.

## 2. Choose the right solution.

Weigh up the options. We'll do the analysis, discuss the options with you, and make a recommendation—the choice we'd make in your shoes.

## 3. Get the job done.

Complete your project, with the right products, on time and to spec. We've got your back all the way, with support during installation and commissioning.

Tap into our expertise and talk to our friendly, expert team.

# B | E | A | V | E | R

To request a quote or explore our product range, visit [beaverprocess.com.au](https://beaverprocess.com.au)

Phone: 1300 295 799 | Email: [sales@beaverprocess.com.au](mailto:sales@beaverprocess.com.au)