

CHECK VALVES

Beaver Small Bore Inline Spring Check Valve 54 bar

A non-return, spring-loaded valve used to prevent backflow in small pipelines involving pressures up to 54 bar (1000 psi).

C02



B | E | A | V | E | R

beaverprocess.com.au

Beaver CO2 Small Bore Inline Spring Check Valve 54 bar



Beaver CO2 Inline Spring Check Valve

The Beaver Small Bore Inline Spring Check Valve is a compact valve that is highly effective in preventing backflow. The tension of the spring inside the valve keeps the disc closed against the seat. Fluid pressure from the inlet port overcomes the spring and allows fluid to flow across the hollow body. Pressure from the outlet side won't open the valve.

The spring check valve provides a greater degree of protection from reverse flow as its disc doesn't rely on gravity to close unlike a swing check valve. This also means it can be installed inline in any direction.

This Beaver valve has a stainless steel body with great overall wear and corrosion resistance, making it suitable for applications involving a wide temperature range and pressures up to 54 bar.

Use this spring check valve to prevent any contamination or equipment damage caused by reverse flow.

KEY FEATURES

- One-way, normally closed valve that doesn't require external control.
- Disc's short travel distance enables quick closing.
- Springs withstand a wide range of temperatures.
- Investment casting results in a precisely moulded body with a smooth finish.
- Metal seat offers excellent wear and temperature resistance for critical applications.

Need technical advice? Our friendly specialists are here to help.

C02

Small Bore Inline Spring Check Valve 54 bar

Tables 1-2. C02 Specifications

Technical Specifications		Material Specifications	
Brand	Beaver	Cap	ASTME A351 CF8M
Model	C02	Gasket	PTFE
Size range	DN8-50 (¼-2")	Disc	ASTME A351 CF8M
Pressure range	0-54 bar (0-1000 psi)	Spring	ASTME A276 304
End connections	Screwed to AS 1722 Part 1, BSP, FxF	Body	ASTME A351 CF8M
Temperature range	-20°C to +180°C		

Diagram. C02 Parts

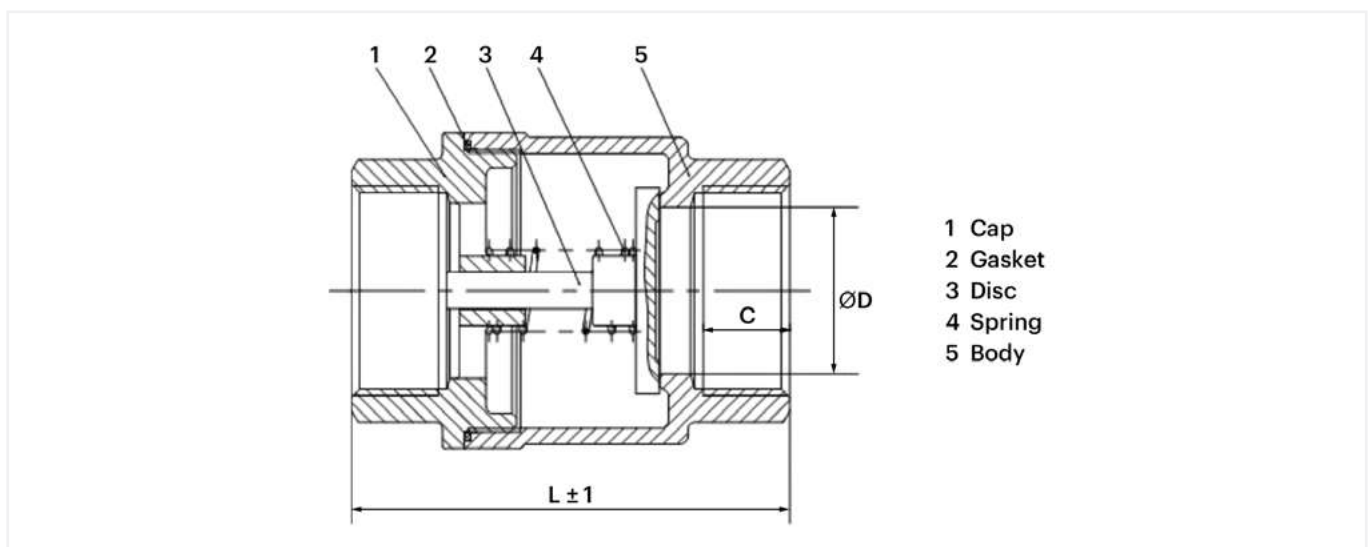


Table 3. C02 Dimensions

Product Dimensions					
Size (DN)	D (mm)	C (mm)	L (mm)	Weight (kg)	CV
15	15	14	61	0.25	13
20	20	16	70	0.3	32
25	25	18	80	0.5	67
32	32	20	90	0.8	115
40	37	20	100	1.1	183
50	50	22	120	1.5	365



We're here to help

We know it's important for you to talk to someone who knows their stuff. So if you have technical questions or need help choosing the right products, talk to our team. We'll walk you through our proven problem solving process.

1. Tell us what you need.

Tell us about your project. What do you want to achieve? What problems do you need to overcome? Let's work back from there.

2. Choose the right solution.

Weigh up the options. We'll do the analysis, discuss the options with you, and make a recommendation—the choice we'd make in your shoes.

3. Get the job done.

Complete your project, with the right products, on time and to spec. We've got your back all the way, with support during installation and commissioning.

Tap into our expertise and talk to our friendly, expert team.

B | E | A | V | E | R

To request a quote or explore our product range, visit beaverprocess.com.au

Phone: 1300 295 799 | Email: sales@beaverprocess.com.au